

FRONT VIEW

SIDE VIEW

TABLE "A" RAFTER SPANS (DOUGLAS FIR #2 OR BETTER)			TABLE "B" HEADER SIZE & SPANS (DOUGLAS FIR #2 OR BETTER)		TABLE "C" FOOTING SIZE	TABLE "D" LEDGER BOLTING	
SIZE	SPACING	SPAN	RAFTER SPAN	HEADER	BASED ON 1000 P.S.F. SOIL BEARING PRESSURE.	ALL LAG BOLTS SHALL HAVE 1/4" PRE-DRILLED HOLES - (SEE NOTE 2)	
				SPAN SIZE			
2 x 4	12" O.C.	9' - 10"	UP TO 12'-0"	8'-0" MAX	4 x 6	18" SQ. X 12" DEEP	3/8" DIA. X 5" LONG AT 16" O.C. STAGGERED
	16" O.C.	8' - 11"		10'-0" MAX	4 x 8	18" SQ. X 12" DEEP	
	24" O.C.	7' - 8"		12'-0" MAX	4 x 10	18" SQ. X 12" DEEP	
	32" O.C.	*6' - 3"		14'-0" MAX	4 x 12	18" SQ. X 12" DEEP	
2 x 6	12" O.C.	15' - 4"	12'-1" TO 20'-0"	8'-0" MAX	4 x 8	24" SQ. X 12" DEEP	(2) 3/8" DIA X 5" LONG AT 16" O.C.
	16" O.C.	13' - 9"		10'-0" MAX	4 x 10	24" SQ. X 12" DEEP	
	24" O.C.	11' - 3"		12'-0" MAX	4 x 12	24" SQ. X 12" DEEP	
	32" O.C.	*9' - 7"		14'-0" MAX	4 x 14	24" SQ. X 12" DEEP	
2 x 8	12" O.C.	20' - 0"					
	16" O.C.	18' - 2"					
	24" O.C.	14' - 10"					
	32" O.C.	*12' - 8"					
2 x 10	12" O.C.	20' - 0"					
	16" O.C.	20' - 0"					
	24" O.C.	18' - 11"					
	32" O.C.	*16' - 2"					
4 x 4	24" O.C.	10' - 0"					
	32" O.C.	*9' - 3"					
	48" O.C.	*7' - 8"					
4 x 6	24" O.C.	15' - 11"					
	32" O.C.	*13' - 9"					
	48" O.C.	*11' - 3"					
4 x 8	24" O.C.	20' - 0"					
	32" O.C.	*18' - 2"					
	48" O.C.	*14' - 10"					

NOTES:


- TWO 2X MEMBERS MAY BE SUBSTITUTED FOR ONE 4X HORIZONTAL FRAMING MEMBER.
- LAG BOLTS MUST FULLY ENGAGE A WOOD STUD OR RIM JOIST AND BE PROVIDED WITH APPROPRIATE WASHERS. LAG BOLTS SHALL BE LOCATED A MINIMUM OF 1-1/2" FROM THE TOP OR BOTTOM OF THE LEDGER.
- NOT DESIGNED TO BE ENCLOSED - ADDITIONAL ENGINEERING ANALYSIS WILL BE REQUIRED IF ENCLOSED.
- SEE PAGE 2 OF 2 FOR CONSTRUCTION DETAILS.

DISCLAIMER:

ALTERNATE PATIO DESIGNS MAY BE POSSIBLE WHEN PROVIDED WITH AN ENGINEERED ANALYSIS. USE OF THIS CONVENTIONAL STANDARD DESIGN IS AT THE USER'S RISK AND CARRIES NO IMPLIED OR INFERRED GUARANTEE AGAINST FAILURE OR DEFECTS.

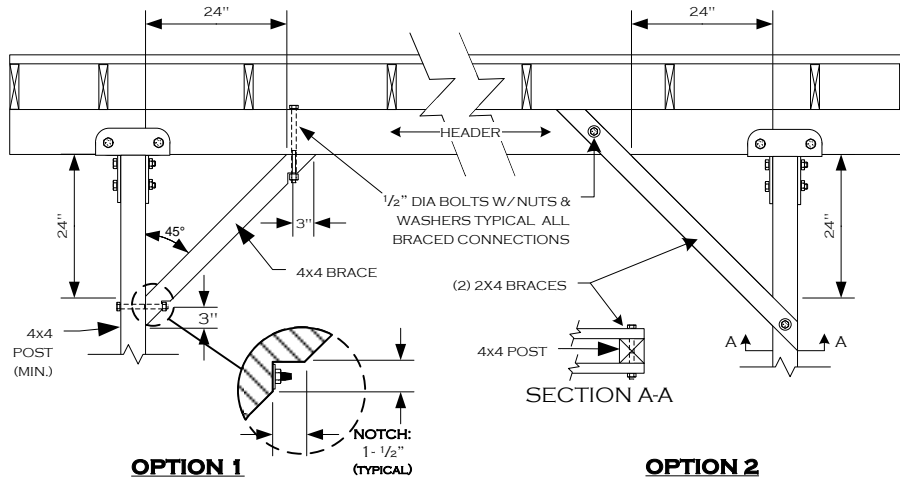
* THIS SPACING AND SPAN IS FOR LATTICE PATIO COVERINGS ONLY.

Any gas lines under the patio cover must be sleeved and vented. 2016 CPC 1210.1.6
Gas and plumbing require a separate permit.

WESTERN RIVERSIDE COUNTY CODE UNIFORMITY PROGRAM			
	CITY OF MENIFEE		
	BUILDING DEPARTMENT		
PATIO COVER STANDARD			
(951)672-6777		29844 HAUN ROAD, MENIFEE, CA 92586	
FAX (951) 679-3843		2/24/2014	WWW.CITYOFMENIFEE.US
		PAGE 1 OF 2	

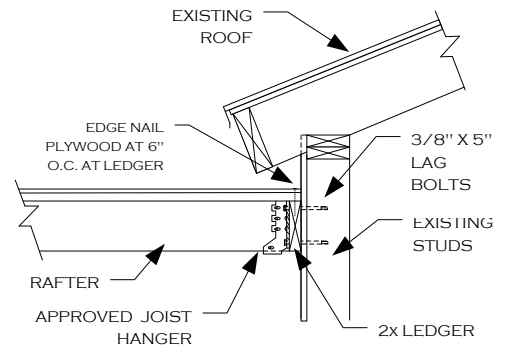
KNEE BRACE DETAIL AT END POSTS

(REQUIRED WHEN RAFTER SPAN EXCEEDS 12 FT.)



LEDGER ATTACHMENT

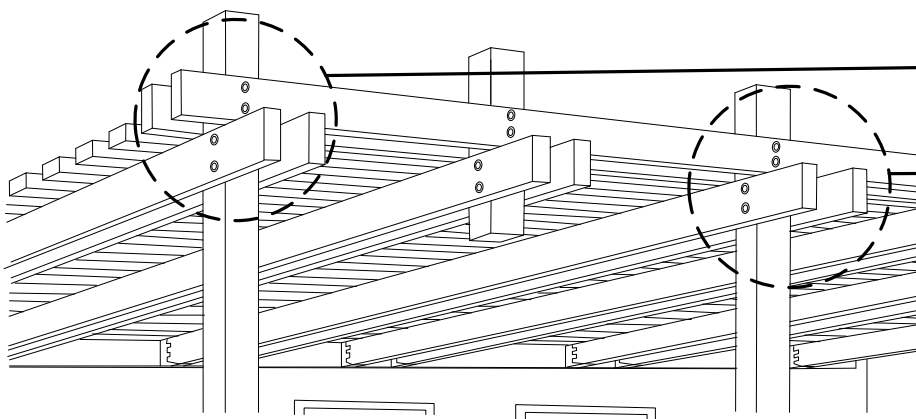
DETAIL



NOTES:

1. USE A CONTINUOUS 2X LEDGER – SAME DEPTH AS RAFTER OR LARGER
2. SEE TABLE "D" FOR BOLTING REQUIREMENTS

INVERTED HEADER DESIGN OPTION (LATTICE ONLY)

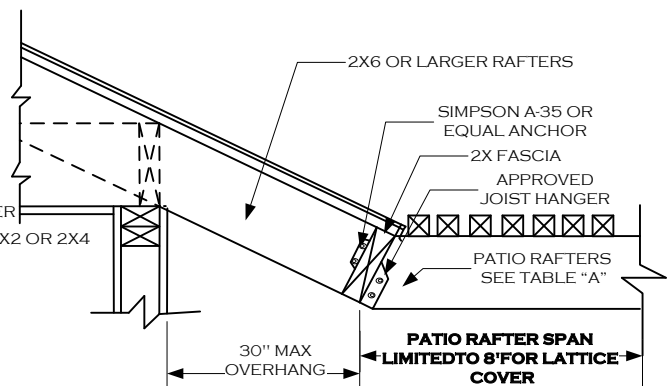
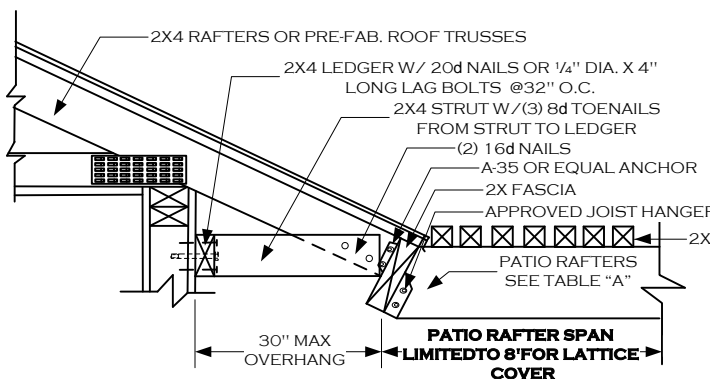


NOTE: KNEE BRACING REQUIRED WHEN RAFTER SPAN EXCEEDS 12 FEET

2X FASCIA (OVERHANG) ATTACHMENT – LATTICE ONLY

OPTION 1

OPTION 2



Any gas lines under the patio cover must be sleeved and vented. 2016 CPC 1210.1.6
Gas and plumbing require a separate permit

NOTE: VERIFY STRUCTURAL SOUNDNESS OF ROOF RAFTERS FOR DECAY OR TERMITE DAMAGE, AND REPLACE WITH LIKE MATERIALS AS NEEDED, AFTER CONSULTATION WITH THE BUILDING DEPARTMENT.

WESTERN RIVERSIDE COUNTY CODE UNIFORMITY PROGRAM



CITY OF MENIFEE BUILDING DEPARTMENT

PATIO COVER STANDARD

(951) 672-6777

29844 HAUN ROAD, MENIFEE, CA 92586

FAX (951) 679-3843

2/24/2014

WWW.CITYOFMENIFEE.US

PAGE 2 OF 2